

Metallic shine
and individual
patterns



for concrete
floors

Temafloor P 300 metallic shades

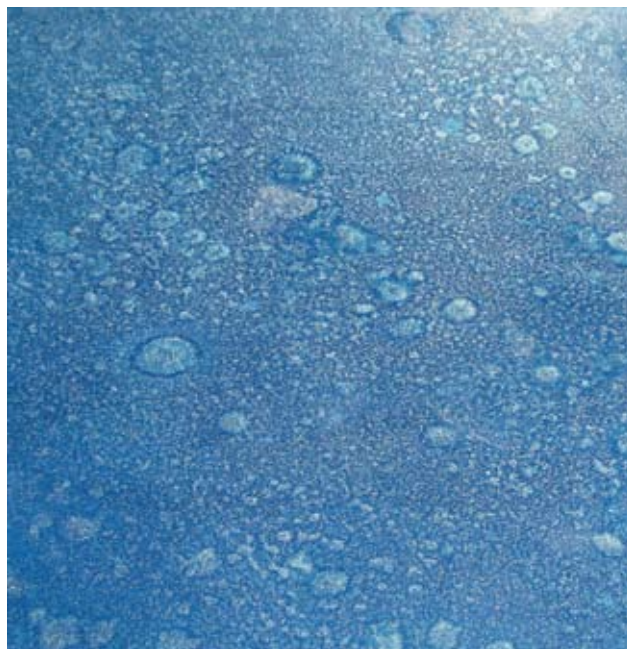
New attractive metallic shades are commonly used in industrial applications. By using Temafloor P 300, it is now possible to create patterns and surfaces with metallic shades also on concrete. Special effects are especially suited for premises where a trendy outlook is appreciated, e.g. in restaurants, cafés, shopping centers and business premises.

Temafloor P 300 is a two-component solvent-free epoxy floor coating. The product can be tinted to all metallic colour shades in the RAL EFFECT collection using Tikkurila's Temaspeed Premium tinting system, due to its aluminium pigmented base paint.

- Has good resistance to mechanical and chemical stress
- Recommended film thickness varies from 0.5-1mm
- Forms a durable, seamless, easy-to-clean and economical surface
- Offers a selection of attractive, trendy colour shades

Technical -data (+23°C, RH 50 %)

Film thickness	0.5-1mm
Density, ready made mixture	1.4 kg/l
Initial curing time	6 - 8 hours
Full chemical cure	7 days
Max. RH% in substrate	< 97%
Application temperature	+10°C to +35°C
Compressive strength, ISO 604	51.2 MPa
Flexural strength, ISO 178	47.0 MPa
Flexural modulus, ISO 178	2.9 MPa
Tensile strength, EN13892-9	27.0 MPa
Max. temperature immersion	+60°C
Max. temperature, dry heat	+70°C
Chemical resistance	See separate data sheet
Water resistance	Yes
Fire safety EN 13501-1	Bfl-s1



Preconditions for a successful application

Pretreatment and priming: Use either Temafloor 200 or Temafloor 400 epoxy varnish

Top coating: Temafloor P 300 can be applied with a brush, roller or high pressure sprayer. High pressure spraying together with different colour shades produces a vivid surface with a metallic shine effect. The metallic surface can also be patterned by rolling crosswise, resulting in fabulous contrasts which vary depending on the amount of light and angle of light sources.

